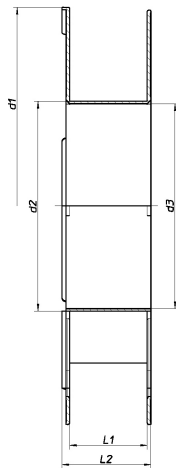
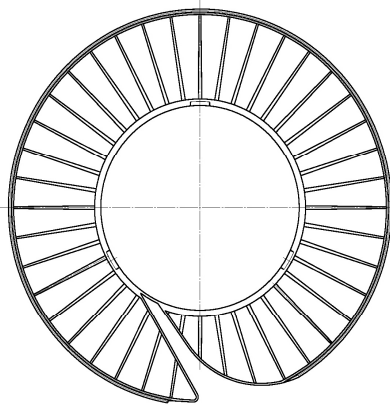
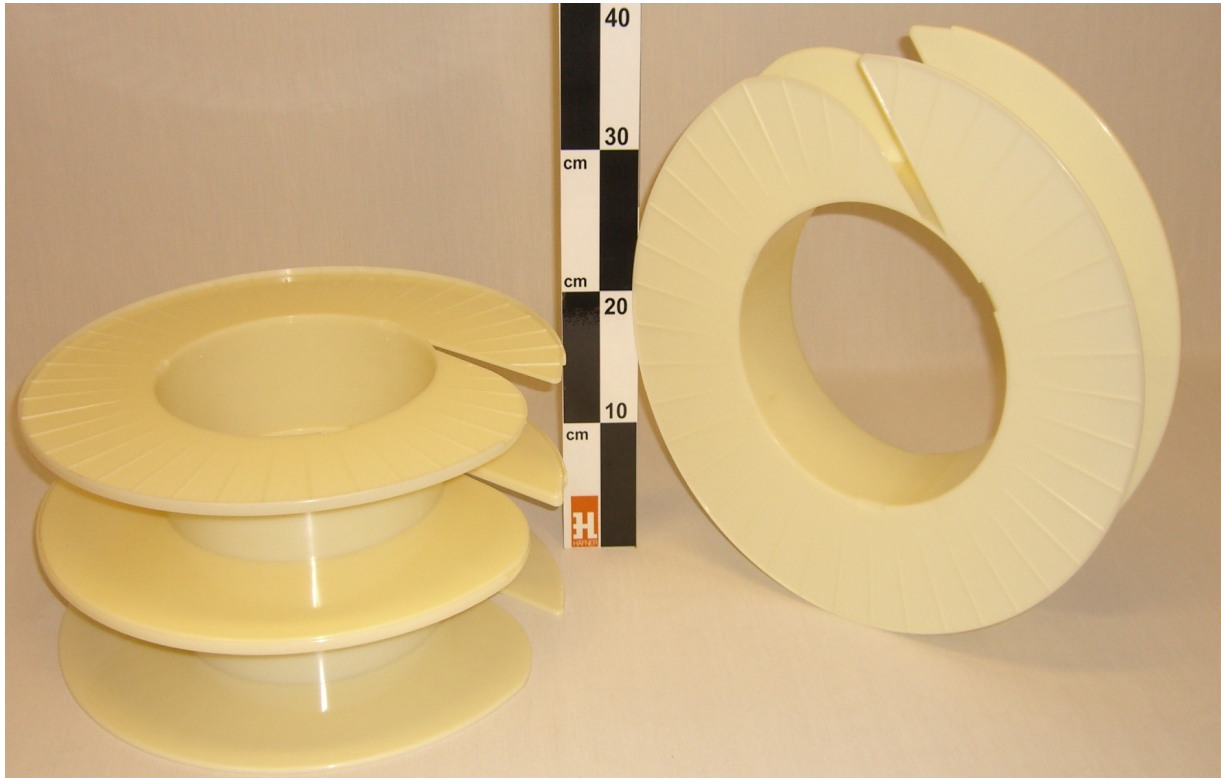


Spule / Reel/MT 396 / 205



Maße / dimensions :

d 1	[mm]	396	15,6	[inch]
d 2	[mm]	210	8,3	[inch]
d 3	[mm]	205	8,1	[inch]
L 1	[mm]	92	3,6	[inch]
L 2	[mm]	80	3,1	[inch]
V	[cm ³]	7082	432,7	[inch ³]

Material / material:	Spule aus SAN Auch andere Qualitäten lieferbar	/	reel SAN also available in other material qualities
Besonderheiten / peculiarity:	Unter Reinraumbedingungen (Klasse D) produzierte Spule	/	spools produced under cleanroom conditions (class D)
Einsatzzweck / application:	In der Medizintechnik für das Wickeln von Schläuchen und Kanülen	/	in the area of medical technology for winding tubes and canules
Verpackung / packaging:	45 Stck. im Karton 120 x 80 x 850 cm	/	45 pcs. per carton; dim. 47 x 31 x 33 inch